



Workshopyard Ottensen

commercial co-building

Commercial spaces for small businesses - cooperatively owned

Workshops have a hard time finding affordable and well located commercial spaces.

Lots of businesses move to the outskirts of Hamburg losing their valued customers.

The project „Handwerkerhof Ottensen“ proves that there is an alternative.

On a rather small but centrally located plot a four-story workshop building has been realized.

Floor plans were designed to meet the desired individual needs and the cooperative investing model allowed for affordable rents.

Goal of this project are participation of the tenants during the planning, networking and stable rents.

These aspects secure the location and enable the businesses for planning across the generations.

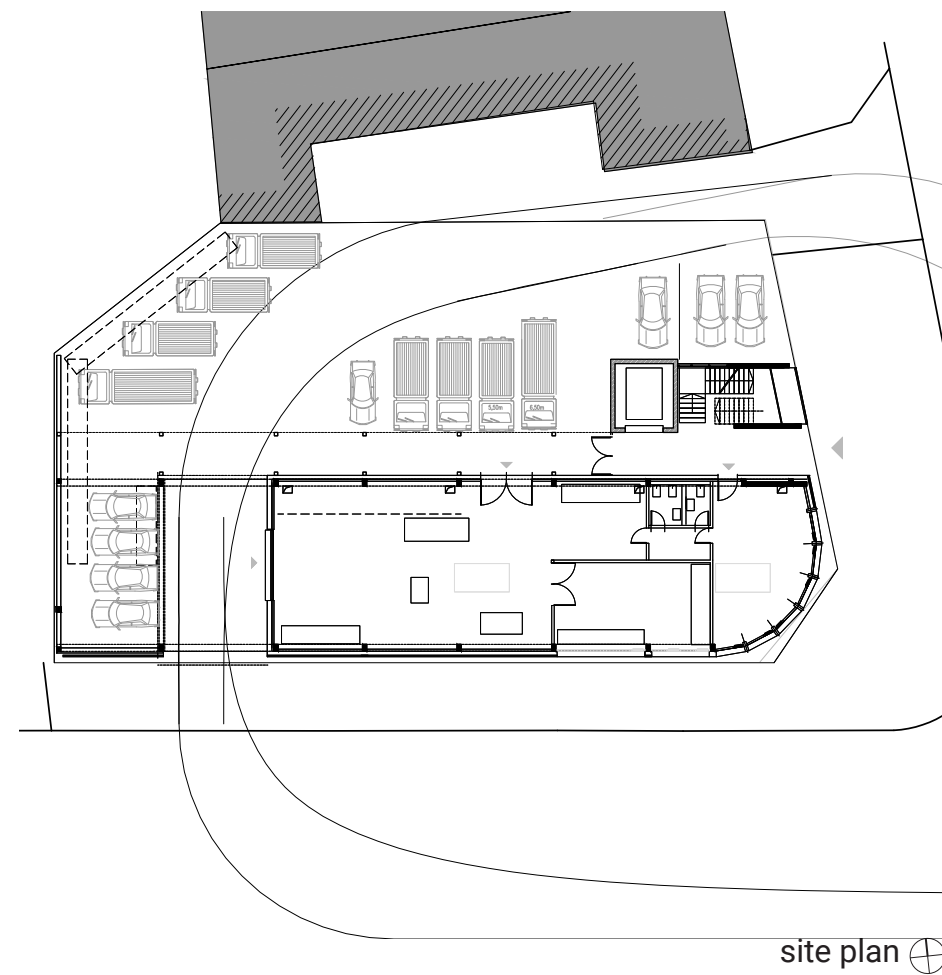
The lower three stories are solely rented by workshop businesses leaving the fourth for offices.

Being able to reduce the columns makes it possible to separate the space in diverse and flexible sized compartments.

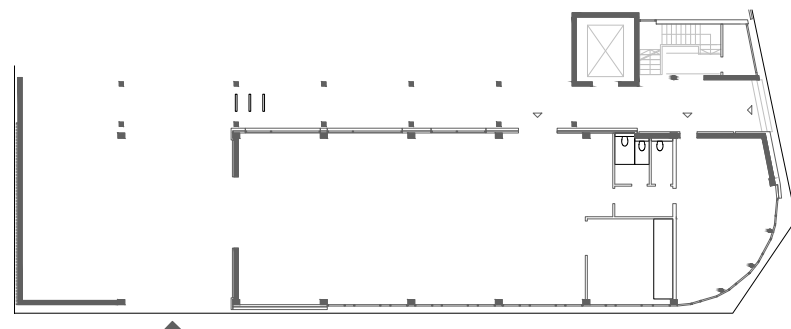
gross area 1565 m² **building cost** 2,3 Mio € KG 300+400

year 2015 **size** 16 Einheiten **LPH** 1-7

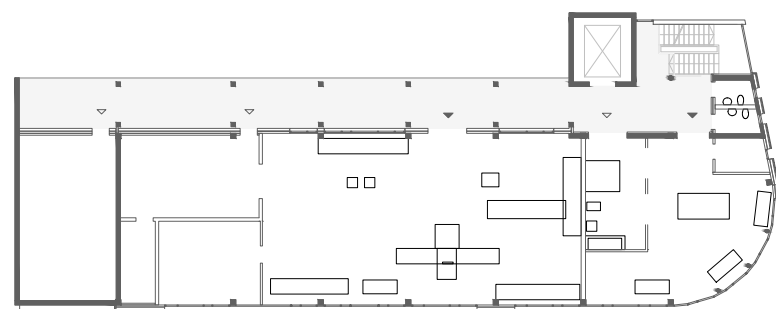




site plan ⊕



ground floor ⊕



1st floor ⊕

