

Celler Straße Riensförde

residential

Residential project in the hanseatic city of Stade

The city of stade held an investor/architectural competition in 2014 for the larger properties in the "Heidesiedlung Riensförde".

Neustadtarchitekten's concept convinced the jury.

The two-storey building in the celler starße consist of 15 appartements.

Their sizes range from 49-126 m2 with both one-storey appartements and duplexes.

Parallel to the street curvature the buildings cubature bends around the staircase.

The street façade forms a brick backbone of the building.

Brick and plaster change with the setbacks building on the south façade of the building facing the gardens.

The setbacks frame the terraces on the ground floor and are covered by balconies on the upper floors.

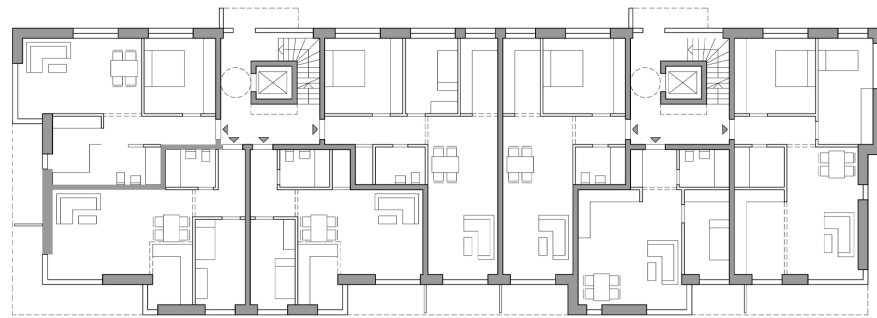
Energywise the building meets KfW-55 standards with the main building material being insulated bricks.

Similar to a terraced house the duplex appartements are accessible by their own entrances.

gross area 1.900 m² **building cost** 2,17 Mio € KG 300+400

year 2017 **size** 15 appartements **LPH** 1-5





ground floor



first floor

