

Sanddornweg, Harsefeld

residential

multi-family home in Harsefeld

Harsefeld grew throughout the last couple of years.

And also at the new development "am Rellerbach" further houses will be erected.

At the Sanddornweg we designed a residential building consisting of eight appartements.

The L-shaped building accentuates the entrance orientating itself towards the street on the one hand.

On the other it makes for a small green space to welcome any visitor and inhabitant.

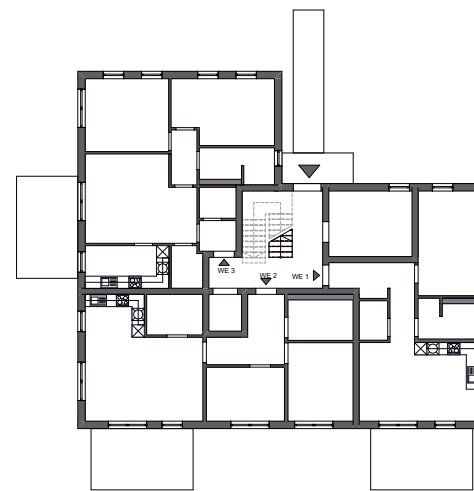
On the east there is plenty of parking for the future tenants. Including a bike parking shed.

Facing south and west are generous balconies and large openings within the façade to catch as much light as possible.

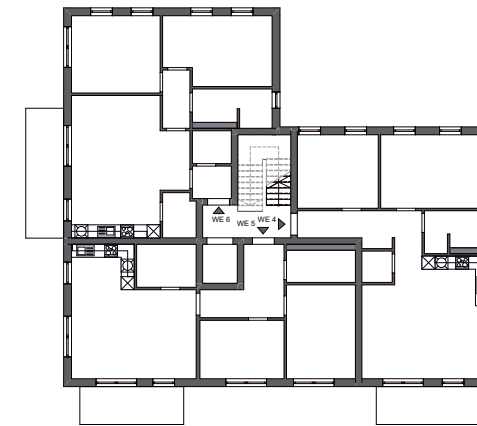
On ground floor the indoors is extended to the outdoors by large terraces.

The building will be constructed of highly insulated bricks.

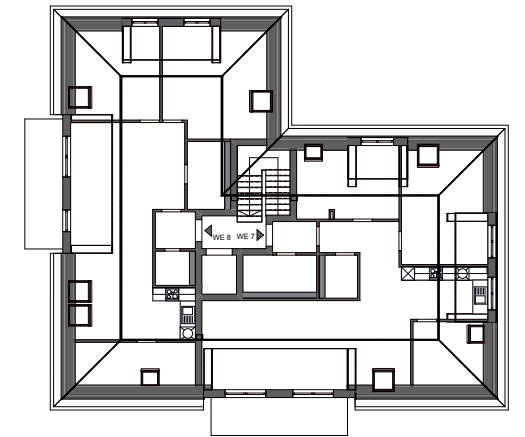
Therefore we achieve the desired energy standard without using a mantled insulation construction.



ground floor



1st floor



2nd floor



gross area	660 m ²	building cost	1,40 Mio € KG 300+400
year	2020	size	8 appartements
foto	Anselm Gaupp	LPH	1-7



Neustadtarchitekten - Röhrigstraße 11 - 22763 Hamburg Ottensen - www.neustadtarchitekten.de

