

Passivhaus Sophienallee

co-building group

Neustadtarchitekten had an eye on the property south of the Fruchttallee in Hamburg Eimsbüttel for a long time already.

When it was on the market due to the second „Wohnungsbauinitiative“ in Hamburg, Neustadtarchitekten transformed it during a concept competition into a passivehaus for a co-building group

The design convinced the federal decision makers and singles, couples and families interested in a co-building group alike.

Another specialty was the innovative construction concept as a hybrid building.

Load bearing walls make up the inside whilst a well insulated timberframeconstruction functions as the facade of the building

Of course a system of axis needed to be introduced yet flexibility of the floor plans was key. In line of the staircases are the bays.

They can be either added to the apartment to left or right. This makes for a large number of combinations, small or large, one level or duplex Appartements ranging from 63-130 qm.

This variety also shows in the facade with its wooden profiles, green cement-Fibre plates and plaster elements.

The Passivhaus had a punctual completion meeting the budget and therefore being one of the first completed Passivhäuser of the second „Wohnungsbauoffensive“

gross area 1720 m²

building cost 3,4 Mio € KG 300+400

year 2011

size 16 WHG

LPH 1-9

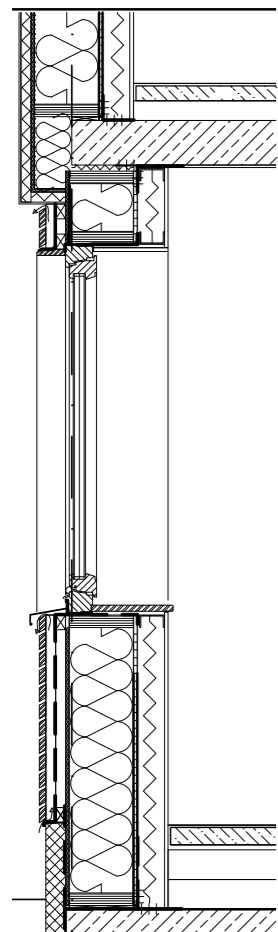




first floor 



ground floor



detail section

