

## Kindergarten SV Lurup

Kindergarten in combination with lockerrooms for sportclub SV Lurup

As a Sportsclub the SV Lurup was running a childcare specialised on movement for years.

Therefore it was no surprise that a new childcare was planned using the initiative „Krippenausbauprogramm“ when the need for new locker rooms arose.

The two-story building includes also a small gym which is accessible for external users as well.

The different users at different hours of the day call for a clearly articulated architectural concept in order to provide zoning and orientation

The element linking the childcare in the east to the gym with lockerrooms in the West is the staircase with the entrance hall.

Horizontally the building is divided in half by the type of construction.

Where as the groundfloor with its Wetrooms is build massively the first story and roof consists of a timber construction.

The facade itself follows this concept: red plaster for the base and wood cladding for the upper part.

Energywise the building reaches a KfW55 standard due to a ventilation system with heat recovery and solar water heating.rung und Zonierung.

**gross area** 987 m<sup>2</sup>

**building cost** 800.000 € KG 300+400

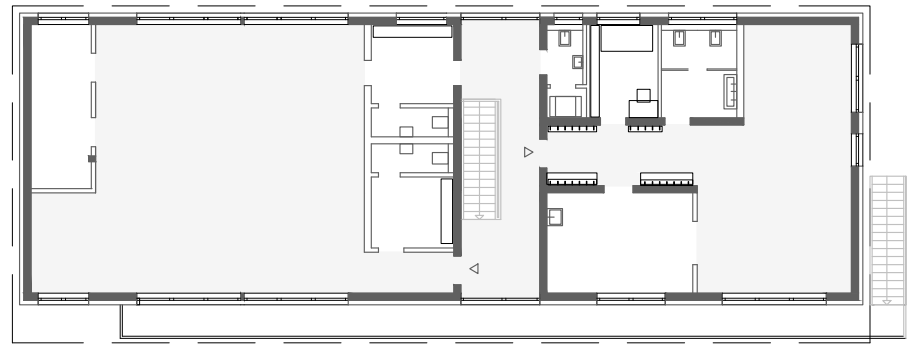
**year** 2011

**size** 2 groups

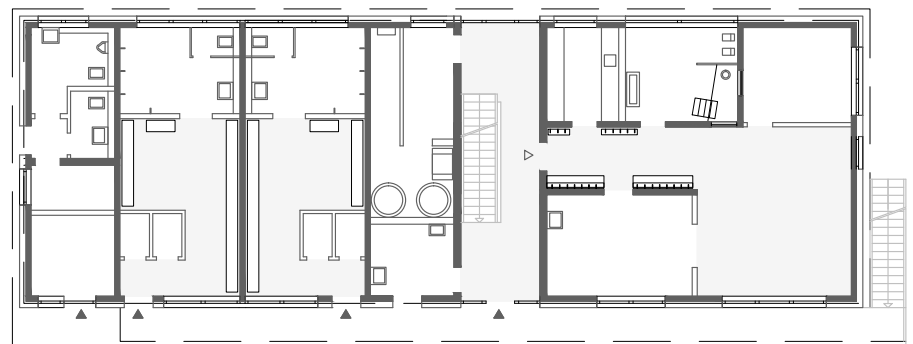
**LPH** 1-9







1st floor



ground floor

